

Request for Information (RFI) Instructions

Inuvialuit Energy Security Project (IESP) - Environmental and Engineering Field Studies – Summer 2021

Process Number: IPC202102

1. Background and Objectives of this Request for Information (RFI)

The Inuvialuit Petroleum Corporation (IPC) intend to issue one or more contracts to Inuvialuit company(ies) for local field studies to be completed in the summer of 2021. The successful company(ies) may be required to complete necessary permits, environmental or engineering reports, conduct field work, and document all local traditional knowledge obtained during the course of the field work.

The successful bidder(s) may or may not be required to lead or assist with any permits necessary for the work scope. IPC have approvals from the Inuvialuit Land Administration and the Environmental Impact Screening Committee for the Inuvialuit Energy Security Project (IESP). Additional research permits for specific scopes may be required from the Aurora Research Institute, Fisheries and Oceans Canada and/or the Prince of Wales Northern Heritage Center.

The objectives of this Request for Information (RFI) are as follows:

- To gauge interest in the upcoming work;
- To ensure qualified bidders are given the opportunity to bid on any or all scopes of work;
- To determine which scopes of work bidders are interested in bidding; and
- To bring attention to the upcoming work and to get as much participation from Inuvialuit companies as possible.

2. Scope of the Work

The Project Area for the IESP is roughly rectangular in shape and is located approximately 12-16 km south of Tuktoyaktuk, NT. The entire Project Area is located on Inuvialuit private 7(1)(a) lands. For greater reference, a suspended well in the Project Area is located at 69° 17' 50.5"N latitude and 133° 04' 45.4"W longitude. A map of the Project Area is provided as Figure A1-1.

Specific sampling locations will be provided during the contract stage. All environmental sampling locations are within the Project Area.

All of the Project Area is accessible by ATV. The sampling locations are all less than 4km from the Inuvik Tuktoyaktuk Highway (ITH). Environmental Protection Plans, regulatory conditions and IPC commitments are in place and will also be provided at contract stage. Bidders should be aware that it is expected that the field portion for most of the scopes of work can be completed in 1-3 days, plus travel time.

For the purposes of this RFI, "field studies" refers broadly to various disciplines of environmental and engineering services and includes, but is not limited to:

Environmental Studies

1. Archaeological Impact Assessment of one (1) area less than 500 sq meters
2. Collection and laboratory (chemical) analysis of surface water at several lakes and streams
3. Fish habitat characterization of one (1) stream and pond
4. Collect readings from four (4) previously installed ground temperature cables
5. Baseline air quality sampling (NOx, CO, PM30, PM10, PM 2.5, VOCs)
6. Baseline noise sampling (day/night)
7. Baseline soil sampling at several locations
8. Research permits as needed

Engineering Assessments:

1. Engineering assessment of pre-fabricated bridge parts in Aklavik
2. Logistics assessment for transport routes from Nisku, Alberta to Tuktoyaktuk and potential lay down areas in Inuvik and Tuktoyaktuk
3. Assessment of Borrow Source 177 located south-east of the Project Area.

3. Nature of this RFI

The purpose of the RFI is to identify qualified Inuvialuit businesses who are interested and capable of doing one or more of the work scopes needed during the summer season of 2021.

This is not a bid solicitation; it is a request for information. This RFI may or may not result in an award or request for a services contract. As a result, potential suppliers of any good or services described in this RFI should not reserve supplies or facilities, nor allocate resources, as a result of any information contained in this RFI. This RFI will not result in the creation of any source list. Therefore, whether or not any potential supplier responds to this RFI will not preclude that supplier from participating in any future procurement. Also, the procurement of any of the goods and services described in this RFI will not necessarily follow this RFI. This RFI is simply intended to solicit feedback with respect to the matter described in this RFI.

4. Response Costs

IPC will not reimburse any respondent for expenses incurred in responding to this RFI.

5. Treatment of Responses

a) Use of Responses: Responses will not be formally evaluated. However, the responses received will be used by IPC to develop or modify procurement strategies or documents for upcoming Request for Bids. IPC will review all responses received by the RFI closing date, and may at its discretion, review responses received after the RFI closing date.

b) Confidentiality: Respondents should mark any portions of their response that they consider proprietary or confidential. IPC will handle the responses in a professional manner and in accordance with our corporate policies.

c) Follow-up Activity: IPC may, at its discretion, contact any respondents to follow up with additional questions or for clarification of any aspect of a response. Depending on the responses received, IPC may

also hold an information session through a web-based video meeting. This event will only be open to individuals or organizations who respond to this RFI.

d) Sole Source Option: **IPC may or may not choose to circumvent the RFP stage of the bidding process and sole source work to one or more respondents based upon the availability and capability of qualified respondents.**

6. Enquiries

Because this is not a bid solicitation, IPC may or may not respond to enquires in writing or by circulating answers to all potential suppliers. However, respondents with questions regarding this RFI may direct their enquiries on or before May 20, 2021 to:

Attention: Mark Fleming

E-mail Address: mfleming@inuivialuit.com

Telephone: 867-777-7067

7. Submission of Responses

Respondents are requested to respond to the questions identified in Section 8 in a pdf format by email.

a) Time and Place for Submission of Responses: Interested parties should email their response to the Inuvialuit Petroleum Corporation, attention Mark Fleming by May 20, 2021 at 1400 hours MDT. IPC reserve the right to refuse any responses submitted after that time.

b) Responsibility for Timely Delivery: Each respondent is solely responsible for ensuring a response is delivered on time.

c) Identification of Response: Each respondent should ensure that their name and return address, as well as the file number: IPC202102 is included in all correspondence.

8. Response Requirements

If your firm is interested in one or more of the scopes of work listed in Section 2 of this RFI, provide a brief letter response including the information asked for below. Please organize your response in five sections as follows:

A - Contact Information

Provide the name, address, phone, fax and email for your primary commercial contact and your lead technical contact. These are the people who we would contact to ask technical questions or negotiate contracts with.

B – Local Content

Indicate if your company is an Inuvialuit Business:

Inuvialuit Business means a business in which more than 50% of the business enterprise is owned by Inuvialuit and the business meets the policy and eligibility criteria to be listed as an

Inuvialuit business on the Inuvialuit Business List (IBL). The criteria include requirements relating to Inuvialuit ownership, physical presence and operational capacity.

To ensure the maximum available benefits are made available to Inuvialuit Businesses, IPC prefer businesses that meet the following criteria. If you have a partner or subcontractor that will be involved in the work, their senior management and employees must be included in the response and calculations below also. Should your business meet any of these criteria please include a short summary outlining the details. Businesses

- 100% Inuvialuit owned and has been for the past two years.
- Greater than 75% of the board is Inuvialuit and have been for the past two years.
- Greater than 50% of all senior management and have been for the past two years.
- Greater than 50% of your staff are Inuvialuit and have been for the past two years.
- Your firm donates more than \$10,000 to Inuvialuit causes annually.

C- Rate Sheet

Provide hourly and daily rates for the roles you expect to provide should your firm be considered for a scope of work. For example, hourly and daily rates for senior engineer, intermediate engineer, junior engineer (if applicable). Similar for archaeologists, biologists, survey engineers, etc.

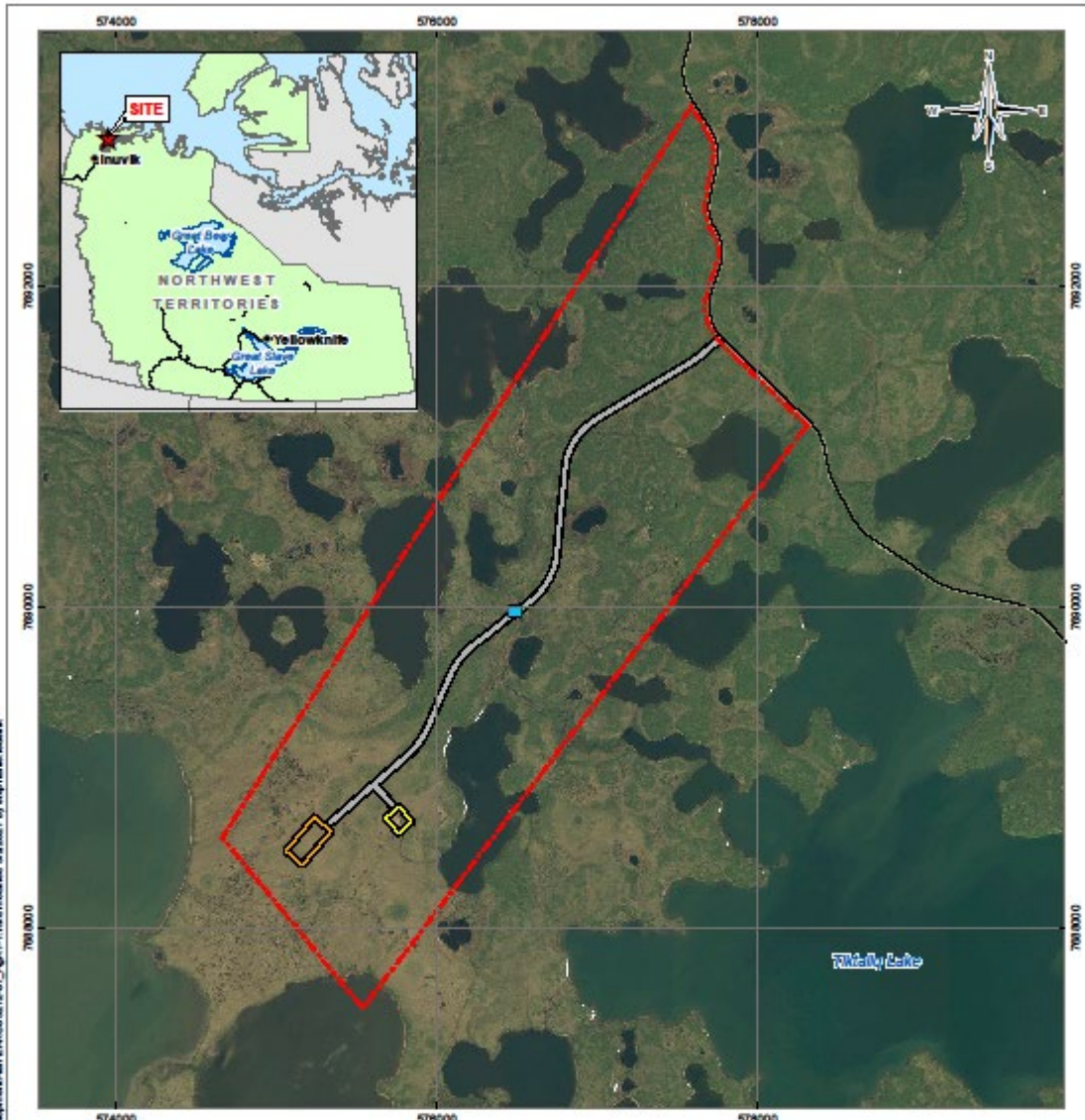
D- Scopes of Interest

Indicate in your response which of the scopes of interest listed in Section 2 of this RFI you are able to supply during the months of July or August 2021. For each scope of interest, provide a brief description of 3 similar projects your firm has completed. The brief description of similar projects need only provide project title, project customer and dates.

E- Corporate Information

Provide the following supporting documents:

- Certificate of insurance
- WCB Clearance Letter - Provide your NWT WCB registration number and status.
- HSE Manual (Table of Contents only)
- Company's COR/SECOR (if you have one)
- COVID Plan – indicate how your company would accomplish the workscope under current NWT COVID restrictions and provide a COVID management plan



G:\Inuvialuit\GIS\ENGINEERING\EA\RC0312-01\MapSet\EP_DevelopmentPlan\EA\RC0312-01_FigA1-1.mxd modified 3/2/2021 by slp/brk/ksk

LEGEND

- Creek Crossing / Bridge
- Access Route
- Energy Facility Pad
- Wellsite Pad
- Project Area (PA)
- Inuvik to Tuktoyaktuk Highway

NOTES
 Base data source:
 Imagery from DigitalGlobe (June 2017).

STATUS
 ISSUED FOR REVIEW

**INUVIALUIT ENERGY SECURITY PROJECT
 DEVELOPMENT PLAN**

Site Location

PROJECTION UTM Zone 8	DATUM NADES
Scale: 1:35,000	



FILE NO.
 EAR0312-01_FigA1-1.mxd

OFFICE TH-ANC	DWN SL	CHK MRV	APVD AM	REV D
DATE March 2, 2021	PROJECT NO. ENG.EAR0312-01			

Figure A1-1