

GOC6533145-DFO-INUVIK  
OFFICE-INSTALL NEW FUME HOOD  
01/22/2026

LIST OF GENERAL  
DRAWINGS



G01 COVER SHEET

LIST OF MECHANICAL  
DRAWINGS



G01 COVER SHEET  
M01 LEGEND, SCHEDULES, DETAILS  
M02 MECHANICAL DEMOLITION PLAN  
M03 MECHANICAL CONSTRUCTION PLAN

LIST OF ELECTRICAL  
DRAWINGS



E01 ELECTRICAL DEMOLITION PLAN  
E02 ELECTRICAL CONSTRUCTION PLAN

LOCATION PLAN



Map data ©2025 Google Imagery ©2025 Airbus, Maxar Technologies



|           |                       |                |
|-----------|-----------------------|----------------|
| B         | ISSUED FOR TENDER     | JAN/22<br>2026 |
| A         | ISSUED FOR 90% REVIEW | NOV/21<br>2025 |
| revisions |                       | date           |

project

DFO-INUVIK OFFICE-  
INSTALL NEW FUME HOOD

drawing

COVERSHEET

|                       |            |                                 |
|-----------------------|------------|---------------------------------|
| designed              | SA         | conçu                           |
| date                  | 2025.10.27 |                                 |
| drawn                 | SA         | dessiné                         |
| date                  | 2025.10.27 |                                 |
| approved              | DB         | approuvé                        |
| date                  |            |                                 |
| Tender                | JH         | Soumission                      |
| PWGSC Project Manager |            | Administrateur de projets TPSGC |
| project number        |            | no. du projet                   |
|                       | GOC6533145 |                                 |
| drawing no.           |            | no. du dessin                   |

G01



MECHANICAL SYMBOLS SCHEDULE

| HEATING & COOLING |               |
|-------------------|---------------|
|                   | GLYCOL SUPPLY |
|                   | GLYCOL RETURN |

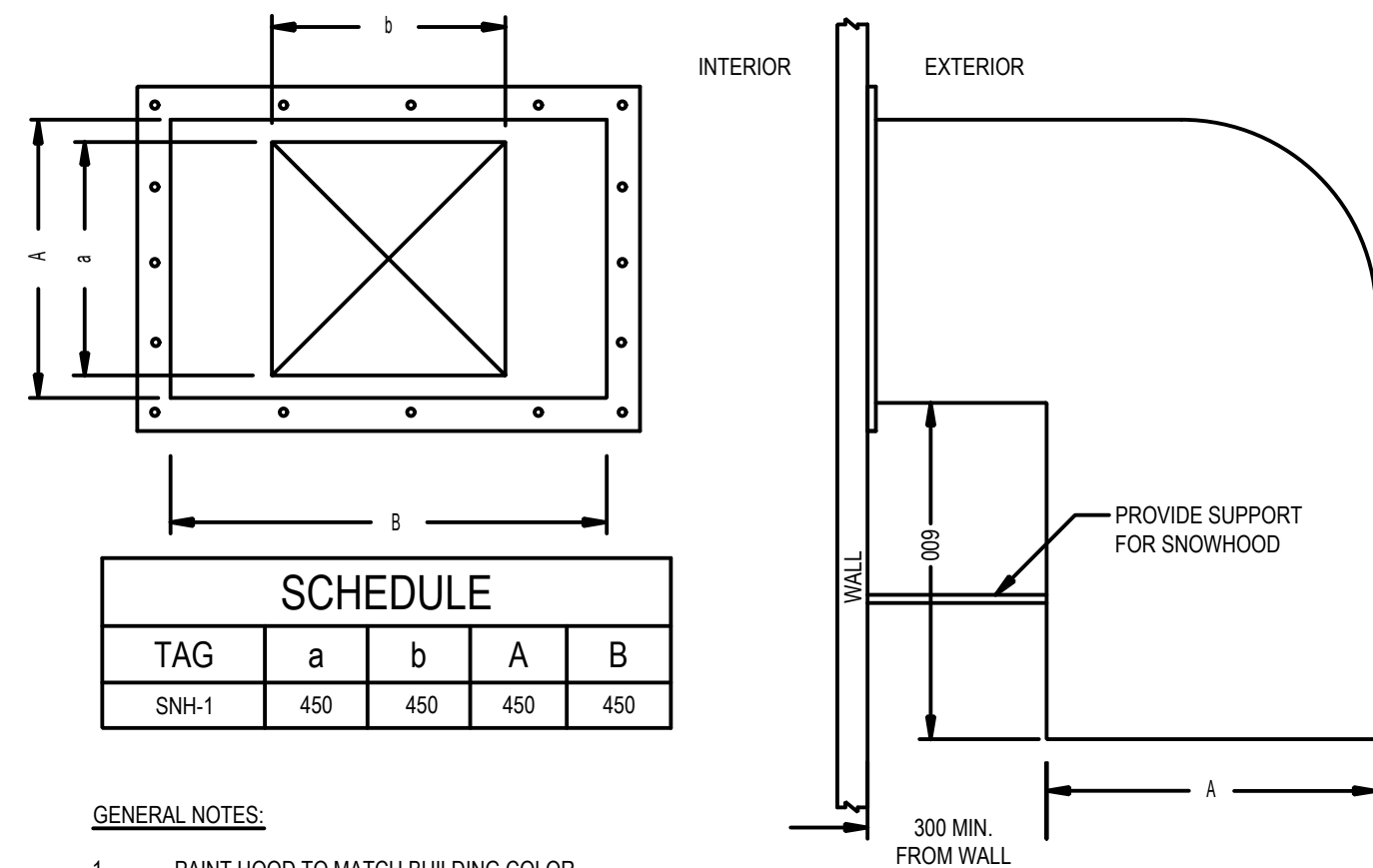
| CONTROLS |                         |
|----------|-------------------------|
|          | CONTROL WIRING          |
|          | GENERIC CONTROL DEVICE  |
|          | THERMOSTAT              |
|          | HUMIDISTAT              |
|          | ELECTRIC SWITCH         |
|          | TEMPERATURE SENSOR      |
|          | FLOW SWITCH             |
|          | PRESSURE SWITCH         |
|          | FLOW ELEMENT            |
|          | PRESSURE INDICATOR      |
|          | PRESSURE TRANSDUCER     |
|          | TEMPERATURE INDICATOR   |
|          | TEMPERATURE TRANSMITTER |

| TAGS & LABELS    |                       |
|------------------|-----------------------|
| QTY. TAG<br>QTY. | EQUIPMENT/FIXTURE TAG |
|                  | AIR TERMINAL TAG      |
|                  | DETAIL TAG            |
|                  | SECTION TAG           |

- GENERAL NOTES**
- ALL WORK SHALL BE IN STRICT ACCORDANCE WITH THE CURRENT NATIONAL BUILDING CODE OF CANADA, NATIONAL FIRE CODE, NATIONAL PLUMBING CODE, AND AUTHORITY HAVING JURISDICTION.
  - ALL EXISTING CONDITIONS SHOWN ARE FOR REFERENCE ONLY. CONTRACTOR TO VERIFY ALL SITE CONDITIONS AS REQUIRED AND ADVISE CONSULTANT OF ANY CONFLICTS THAT MAY EXIST.
  - INSTALL DUCTING AND EQUIPMENT GENERALLY IN LOCATIONS AND ROUTING SHOWN. RUN DUCTING CLOSE TO BUILDING STRUCTURE, PARALLEL TO BUILDING LINES TO MAXIMIZE HEAD ROOM AND WITH MINIMUM INTERFERENCE WITH OTHER SERVICES AND FREE SPACE.
  - THE MECHANICAL PLANS ARE DIAGRAMMATIC IN NATURE AND DO NOT ATTEMPT TO SHOW ALL REQUIRED OFFSETS. CONFIRM ON-SITE EXACT ROUTING OF FIRE SUPPRESSION, PLUMBING, AND MECHANICAL SYSTEMS AND COMPONENTS.
  - CONTRACTOR TO INSTALL ALL EQUIPMENT AND MATERIALS IN ACCORDANCE WITH LOCAL AND NATIONAL CODES AND REGULATIONS AND TO MANUFACTURER INSTALLATION REQUIREMENTS.
  - SUPPLY AND INSTALL ALL FIRE STOPPING MATERIAL AND ENSURE THAT ALL FIRE PENETRATIONS ARE PROTECTED AS REQUIRED BY THE NATIONAL BUILDING CODE OF CANADA AND THE AUTHORITY HAVING JURISDICTION.
  - CONTRACTOR TO VERIFY EXACT COUNTS AND LOCATIONS OF ALL EXISTING CONTROL VALVES, THERMOSTATS, AND CONTROLLERS ON SITE PRIOR TO CLOSE OF TENDER. NOTIFY DEPARTMENTAL REPRESENTATIVE AND CONSULTANT FOR ANY DISCREPANCIES OR FOR CLARIFICATIONS OF SCOPE.
  - CONTRACTOR TO RETAIN SERVICES OF A SEISMIC ENGINEER, LICENSED TO PRACTICE IN THE NORTHWEST TERRITORIES, TO PROVIDE A SIGNED AND SEALED DESIGN OF SEISMIC RESTRAINT SYSTEM REQUIRED. SUBMIT ALL SEISMIC RESTRAINT SYSTEM DRAWING FOR REVIEW.
  - ALL DIMENSIONS ARE IN mm UNLESS OTHERWISE INDICATED.

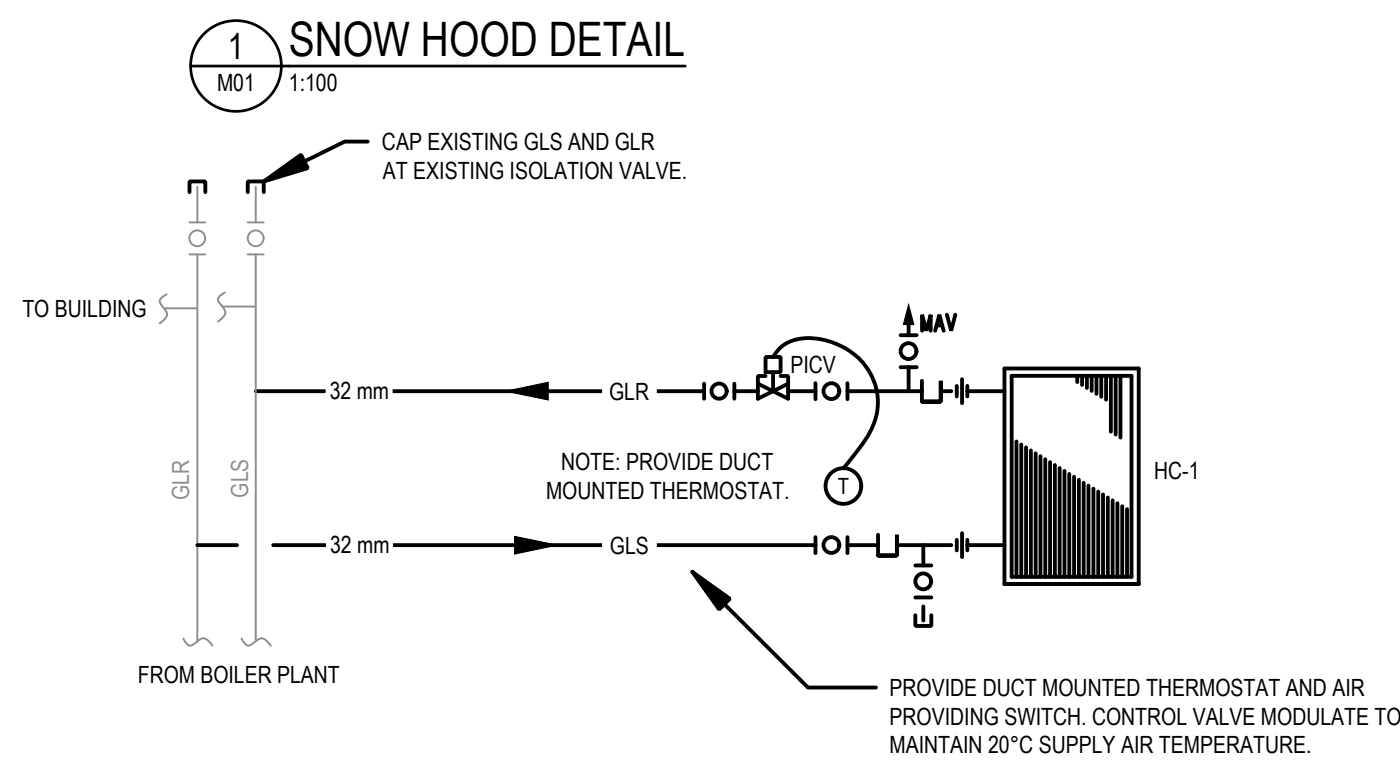
| VENTILATION |                                  |
|-------------|----------------------------------|
|             | SUPPLY/OUTSIDE AIR DUCT UP       |
|             | SUPPLY/OUTSIDE AIR DUCT DOWN     |
|             | RETURN AIR DUCT UP               |
|             | RETURN AIR DUCT DOWN             |
|             | EXHAUST AIR DUCT UP              |
|             | EXHAUST AIR DUCT DOWN            |
|             | ROUND DUCT UP                    |
|             | ROUND DUCT DOWN                  |
|             | ROUND DUCT TEE DOWN              |
|             | ROUND DUCT BREAK                 |
|             | SQUARE DUCT BREAK                |
|             | DUCT ENDCAP                      |
|             | BALANCING DAMPER                 |
|             | FIRE DAMPER                      |
|             | MOTORIZED DAMPER                 |
|             | ACOUSTIC INSULATION              |
|             | DUCT INSULATION                  |
|             | AIRFLOW DIRECTION                |
|             | SQUARE DIFFUSER                  |
|             | ROUND DIFFUSER                   |
|             | LINEAR DIFFUSER                  |
|             | CEILING GRILLE - SUPPLY          |
|             | CEILING GRILLE - RETURN          |
|             | CEILING GRILLE - EXHAUST         |
|             | SIDEWALL GRILLE - SUPPLY         |
|             | SIDEWALL GRILLE - RETURN/EXHAUST |

| PIPING & ACCESSORIES |                               |
|----------------------|-------------------------------|
|                      | DIRECTION OF FLOW             |
|                      | PIPE/DUCT SLOPE DIRECTION     |
|                      | PIPE ELBOW DOWN               |
|                      | PIPE ELBOW UP                 |
|                      | PIPE TEE DOWN                 |
|                      | PIPE TEE UP                   |
|                      | PIPE TEE                      |
|                      | PIPE BREAK                    |
|                      | PIPE ENDCAP/PLUG              |
|                      | PIPE REDUCER                  |
|                      | UNION CONNECTION              |
|                      | FLANGE CONNECTION             |
|                      | FLEXIBLE CONNECTION           |
|                      | CONNECTION TO EXISTING        |
|                      | GATE VALVE                    |
|                      | BALL VALVE                    |
|                      | BUTTERFLY VALVE               |
|                      | CHECK VALVE                   |
|                      | PRESSURE REDUCING VALVE       |
|                      | BALANCING VALVE               |
|                      | 2-WAY MOTORIZED CONTROL VALVE |
|                      | 3-WAY MOTORIZED CONTROL VALVE |
|                      | STRAINER                      |
|                      | SUCTION DIFFUSER STRAINER     |
|                      | PRESSURE RELIEF VALVE         |
|                      | MANUAL AIR VENT               |
|                      | PET'S PLUG                    |
|                      | THERMOMETER W/ WELL/TAP       |
|                      | TEMPERATURE GAUGE W/ WELL/TAP |
|                      | PRESSURE GAUGE                |

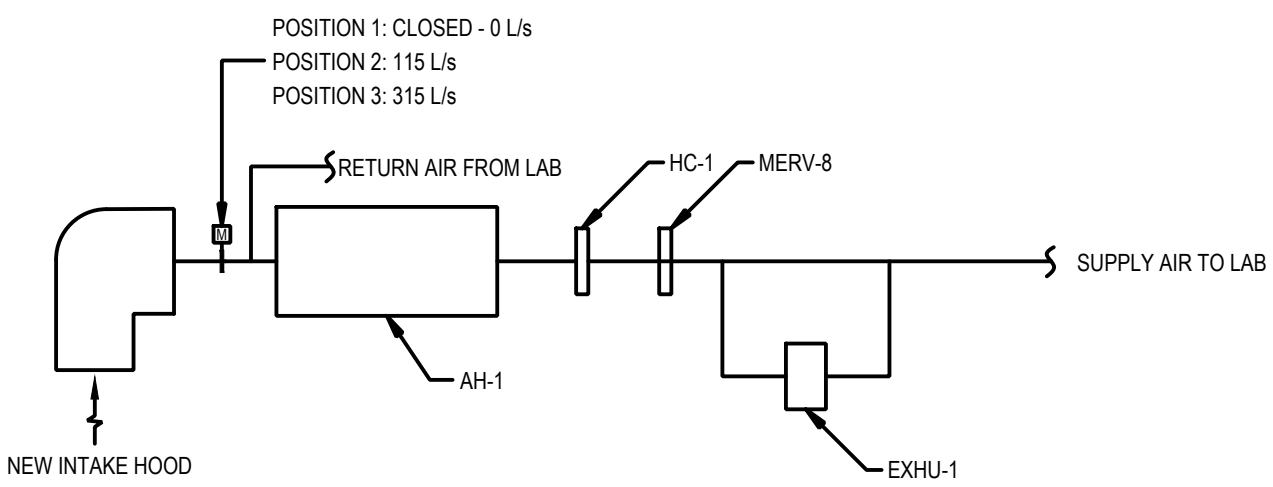


| SNOW HOOD SCHEDULE |     |     |         |
|--------------------|-----|-----|---------|
| TAG                | a   | b   | A B     |
| SNH-1              | 450 | 450 | 450 450 |

- GENERAL NOTES:**
- PAINT HOOD TO MATCH BUILDING COLOR
  - HOOD TO BE CONSTRUCTED OF 20 GAUGE ALUMINUM.
  - SCREEN TO BE CONSTRUCTED FROM 16 GAUGE WIRE MESH SQUARE WITH 25mm x 25mm OPENINGS.



2 HEAT COIL SCHEMATIC

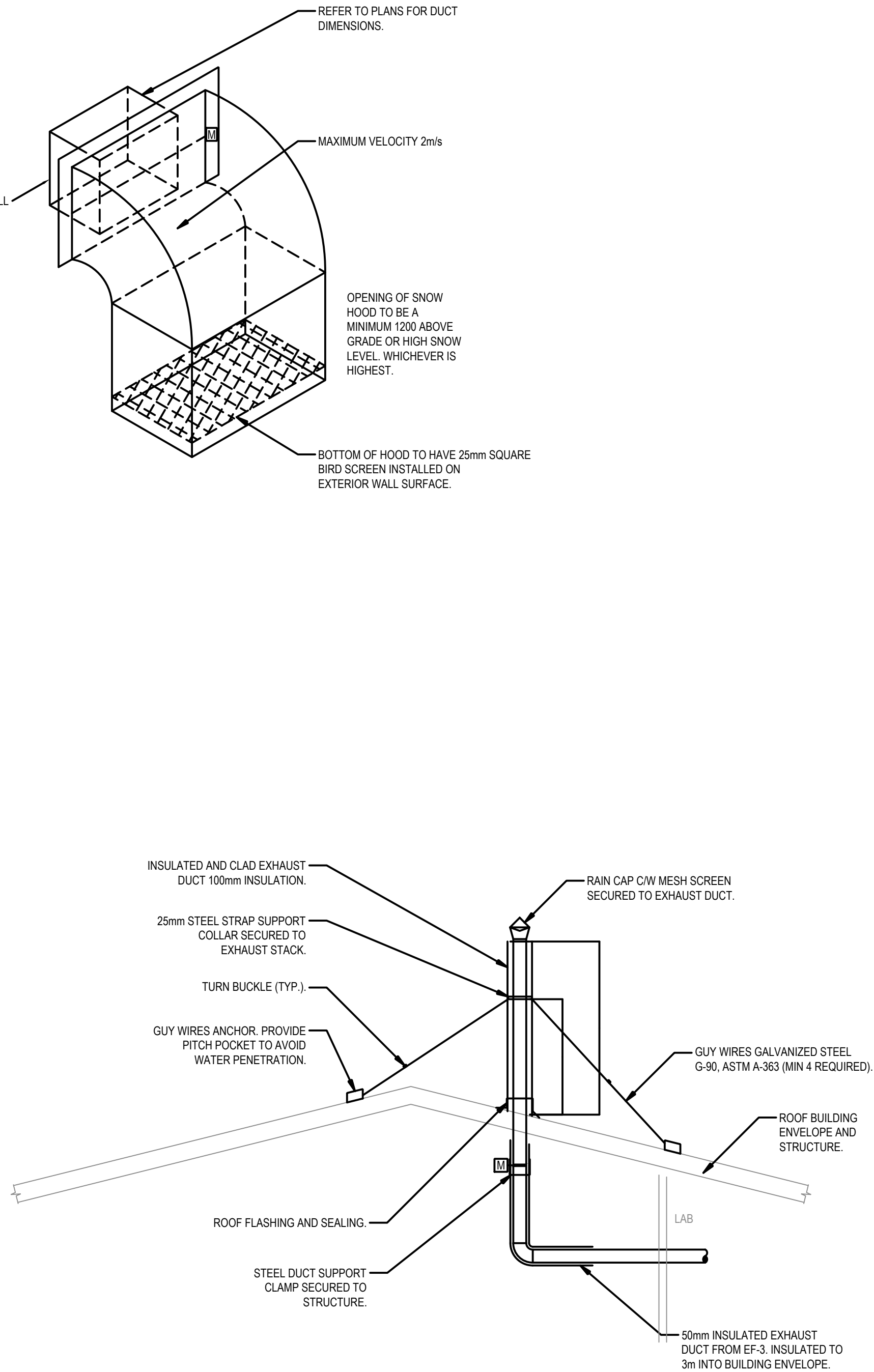


3 SUPPLY FAN AH-1 SCHEMATIC

| HUMIDIFIER SCHEDULE |              |            |         |                 |       |        |      |            |                  |                |                             |               |  |
|---------------------|--------------|------------|---------|-----------------|-------|--------|------|------------|------------------|----------------|-----------------------------|---------------|--|
| TAG #               | MANUFACTURER | MODEL      | SERVICE | DIMENSIONS (mm) |       |        | TYPE | INPUT (kW) | CAPACITY (kg/hr) | AIR FLOW (L/s) | DESIGN AIR TEMPERATURE (°C) | DESIGN RH (%) | NOTES                                    |
|                     |              |            |         | LENGTH          | WIDTH | HEIGHT |      |            |                  |                |                             |               |  |
| EX-HU-1             | CARRIER      | 49BF018120 | #15 LAB | -               | -     | -      | -    | -          | -                | -              | -                           | -             | EXISTING TO BE REMOVED AND RE-INSTALLED. |

| HEATING COIL SCHEDULE |              |                    |               |             |             |    |                       |       |               |             |             |        |                        |                 |        |   |                  |       |
|-----------------------|--------------|--------------------|---------------|-------------|-------------|----|-----------------------|-------|---------------|-------------|-------------|--------|------------------------|-----------------|--------|---|------------------|-------|
| TAG #                 | MANUFACTURER | MODEL              | AIR           |             |             |    | PRESSURE DROP<br>(Pa) | FLUID | FLUID         |             |             |        | PRESSURE DROP<br>(kPa) | DIMENSIONS (mm) |        |   | CAPACITY<br>(kW) | NOTES |
|                       |              |                    | FLOW<br>(L/s) | EAT<br>(°C) | LAT<br>(°C) |    |                       |       | FLOW<br>(L/s) | EFT<br>(°C) | LFT<br>(°C) | LENGTH |                        | WIDTH           | HEIGHT |   |                  |       |
| EX-HC-1               | -            | 24-HH-2            | 330           | 7.2         | -           | -  | -                     | 0.19  | 93            | 82          | 1.05        | -      | -                      | -               | -      | EXISTING COIL TO BE DISCONNECTED AND REMOVED. |                  |       |
| HC-1                  | AQUA AIR     | 5WH0604A - 15 x 15 | 315           | -45         | 20          | 57 | 50% Propylene Glycol  | 0.76  | 71            | 60          | 1.36        | 635    | 190.5                  | 457.2           | 26     | REFER TO 2/M01.                               |                  |       |

| FAN / AIR HANDLING UNIT SCHEDULE |                        |                  |         |                |             |            |        |        |            |                    |   |
|----------------------------------|------------------------|------------------|---------|----------------|-------------|------------|--------|--------|------------|--------------------|---|
| TAG #                            | MANUFACTURER           | MODEL            | SERVICE | AIR FLOW (L/s) | E.S.P. (Pa) | DIMENSIONS |        |        | MOTOR (kW) | ELECTRICAL V/PH/Hz | NOTES   |
|                                  |                        |                  |         |                |             | L (mm)     | W (mm) | H (mm) |            |                    |   |
| EX-AH-1                          | MAGICAIRE              | 24BH             | #15 LAB | 330            | 125         | -          | -      | -      | -          | 120/1/60           | EXISTING SUPPLY FAN. TO BE REMOVED IN PROJECT SCOPE.  |
| EX-EF                            | -                      | -                | -       | -              | -           | -          | -      | -      | -          | 120/1/60           | EXISTING EXHAUST FAN SERVING EXISTING FUME HOOD. TO BE REMOVED IN PROJECT SCOPE.  |
| EX-FH-1                          | -                      | -                | -       | -              | -           | -          | -      | -      | -          | 120/1/60           | EXISTING FUME HOOD. TO BE REMOVED IN PROJECT SCOPE.   |
| EX-EF-1                          | PENN                   | ZEPHYR Z9RA      | #15 LAB | 140            | 125         | -          | -      | -      | -          | 120/1/60           | EXISTING EX-EF-1 TO REMAIN. INFO FOR REFERENCE ONLY. EX-EF-1 CONTROLS TO BE MODIFIED TO PREVENT SIMULTANEOUS OPERATION WITH EF-3. |
| AH-1                             | GREENHECK              | CSP-A700-VG      | #15 LAB | 315            | 150         | 305        | 610    | 305    | 0.157      | 120/1/60           | GALVANIZED STEEL HOUSING WITH DUCT COLLARS. CENTRIFUGAL FORWARD CURVED WHEEL. DIRECT DRIVEN MOTOR IN THE AIR STREAM.              |
| EF-3                             | TWIN CITY FAN & BLOWER | TFE              | #15 LAB | 340            | 150         | 950        | 502    | 873.5  | 0.375      | 240/1/60           | BACKWARD INCLINED BELT DRIVE CENTRIFUGAL FAN. SPARK RESISTANT CONSTRUCTION - TYPE B. UL705 LISTED. 1" SPRING ISOLATORS.           |
| FH-1                             | COLE-PARMER            | LABCONCO 2247300 | #15 LAB | 340            | -           | 635        | 1194   | 1346   | -          | 120/1/60           | FUME HOOD SUPPLIED BY OWNER. INSTALLED BY CONTRACTOR.   |



4 EXHAUST STACK SUPPORT & ROOF PENETRATION DETAIL

|           |                       |             |
|-----------|-----------------------|-------------|
| B         | ISSUED FOR TENDER     | JAN/22 2026 |
| A         | ISSUED FOR 90% REVIEW | NOV/21 2025 |
| revisions |                       | date        |
| project   |                       | projet      |

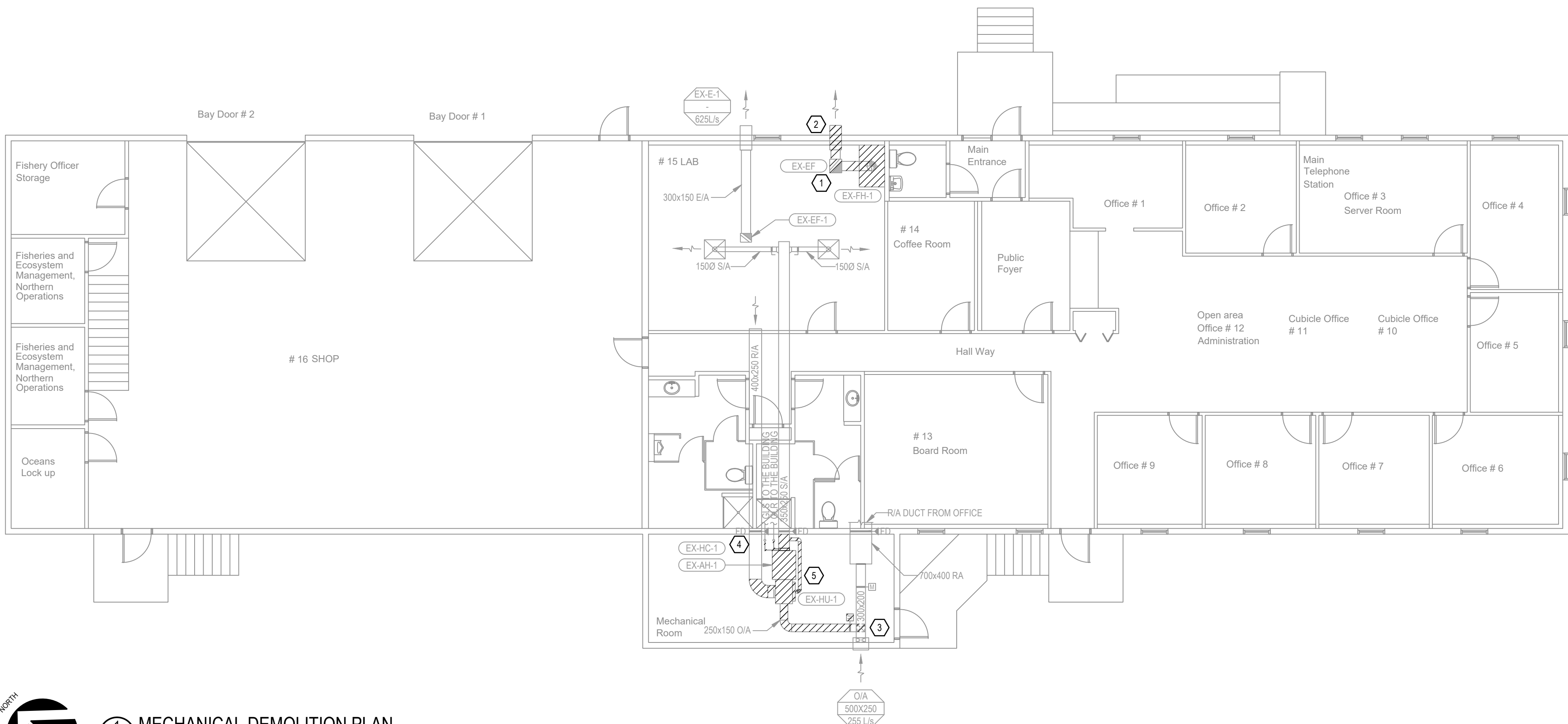
DFO-INUVIK OFFICE-INSTALL NEW FUME HOOD

|         |        |
|---------|--------|
| drawing | dessin |
|---------|--------|

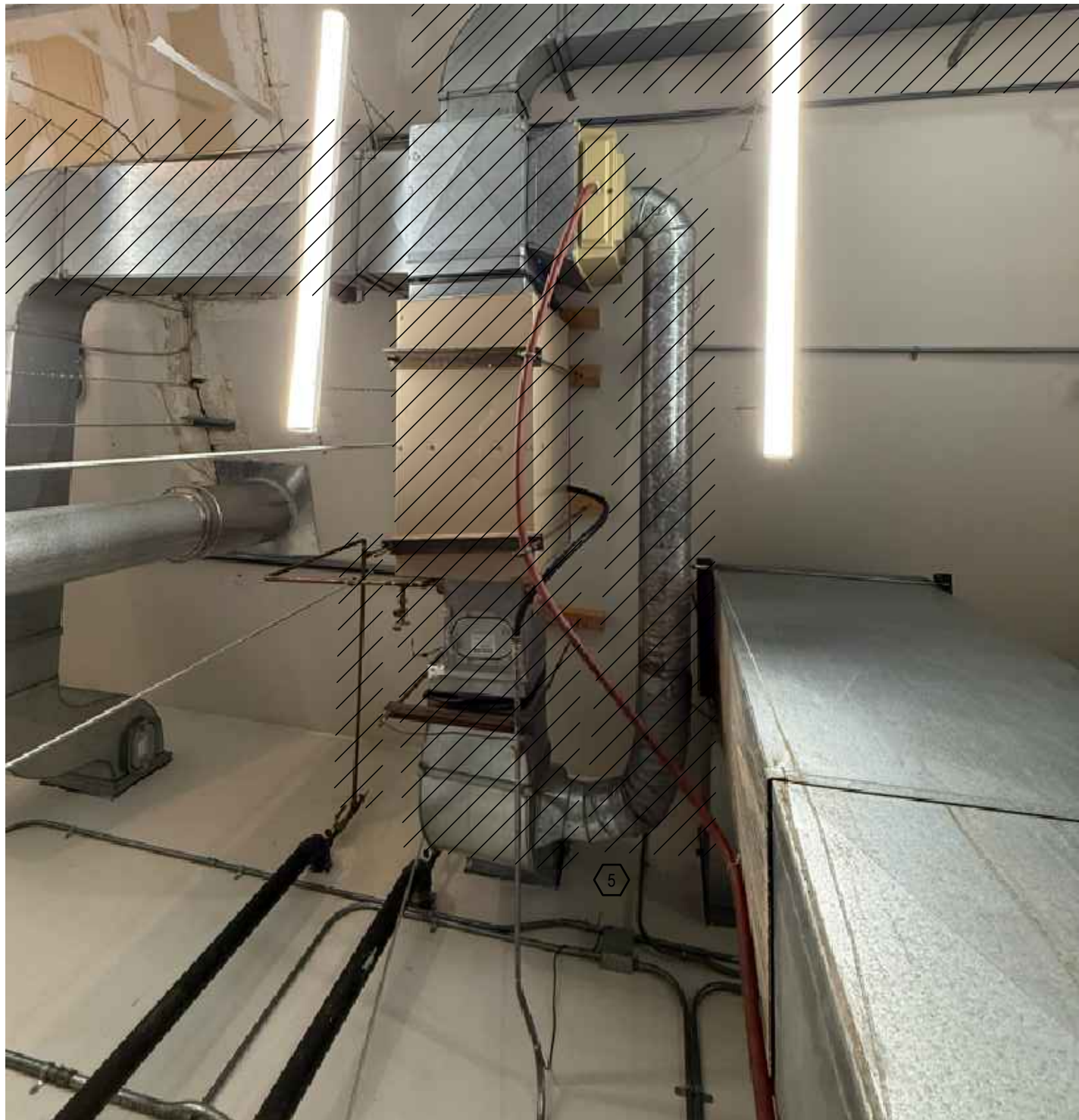
LEGENDS, SCHEDULES, DETAILS

|                       |                                 |               |
|-----------------------|---------------------------------|---------------|
| designed              | SA                              | conçu         |
| date                  | 2025.10.27                      |               |
| drawn                 | SA                              | dessiné       |
| date                  | 2025.10.27                      |               |
| approved              | DB                              | approuvé      |
| date                  |                                 |               |
| Tender                | JH                              | Soumission    |
| PWGSC Project Manager | Administrateur de projets TPSGC |               |
| project number        |                                 | no. du projet |
| GOC6533145            |                                 |               |
| drawing no.           |                                 | no. du dessin |
| M01                   |                                 |               |

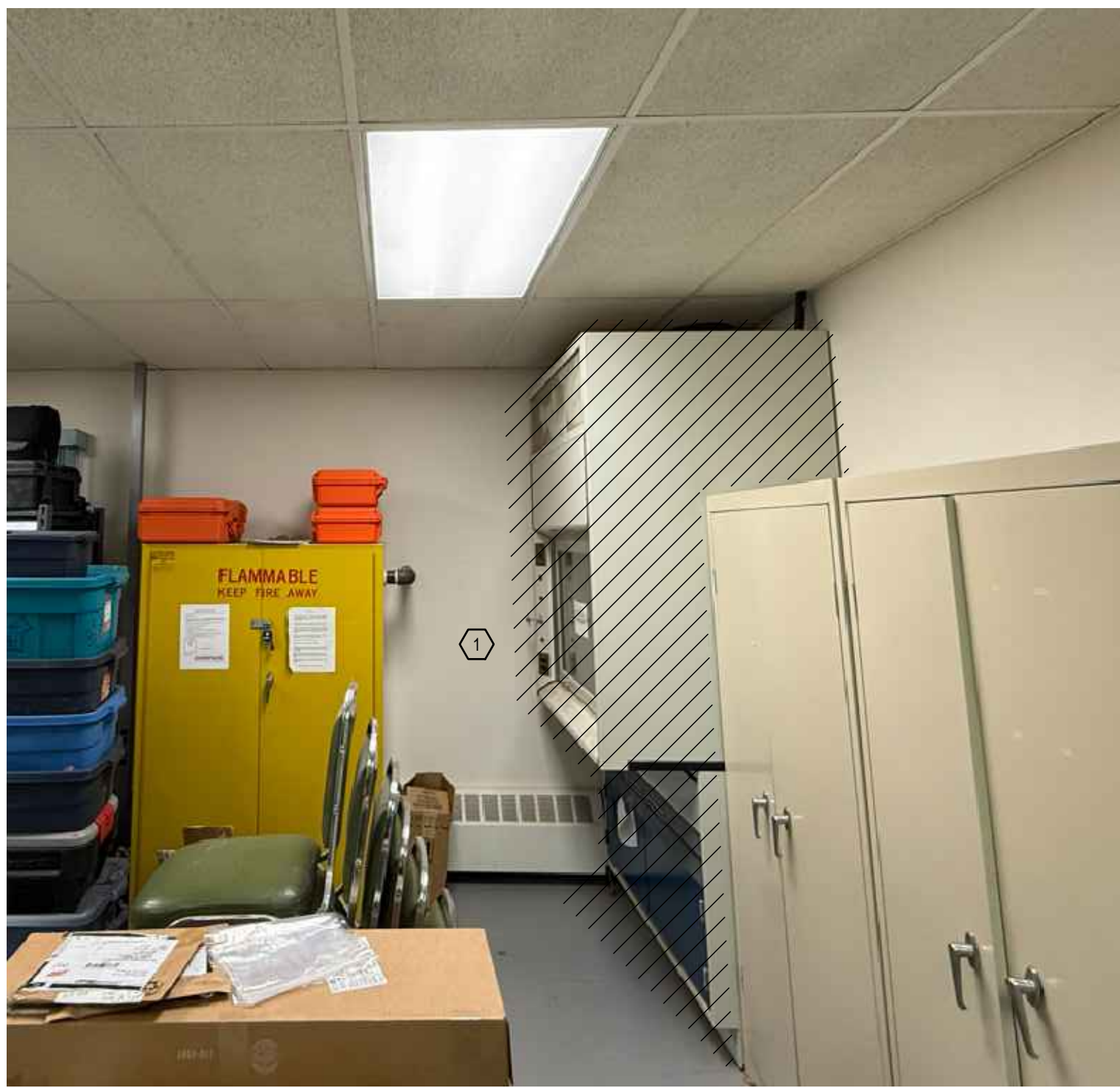




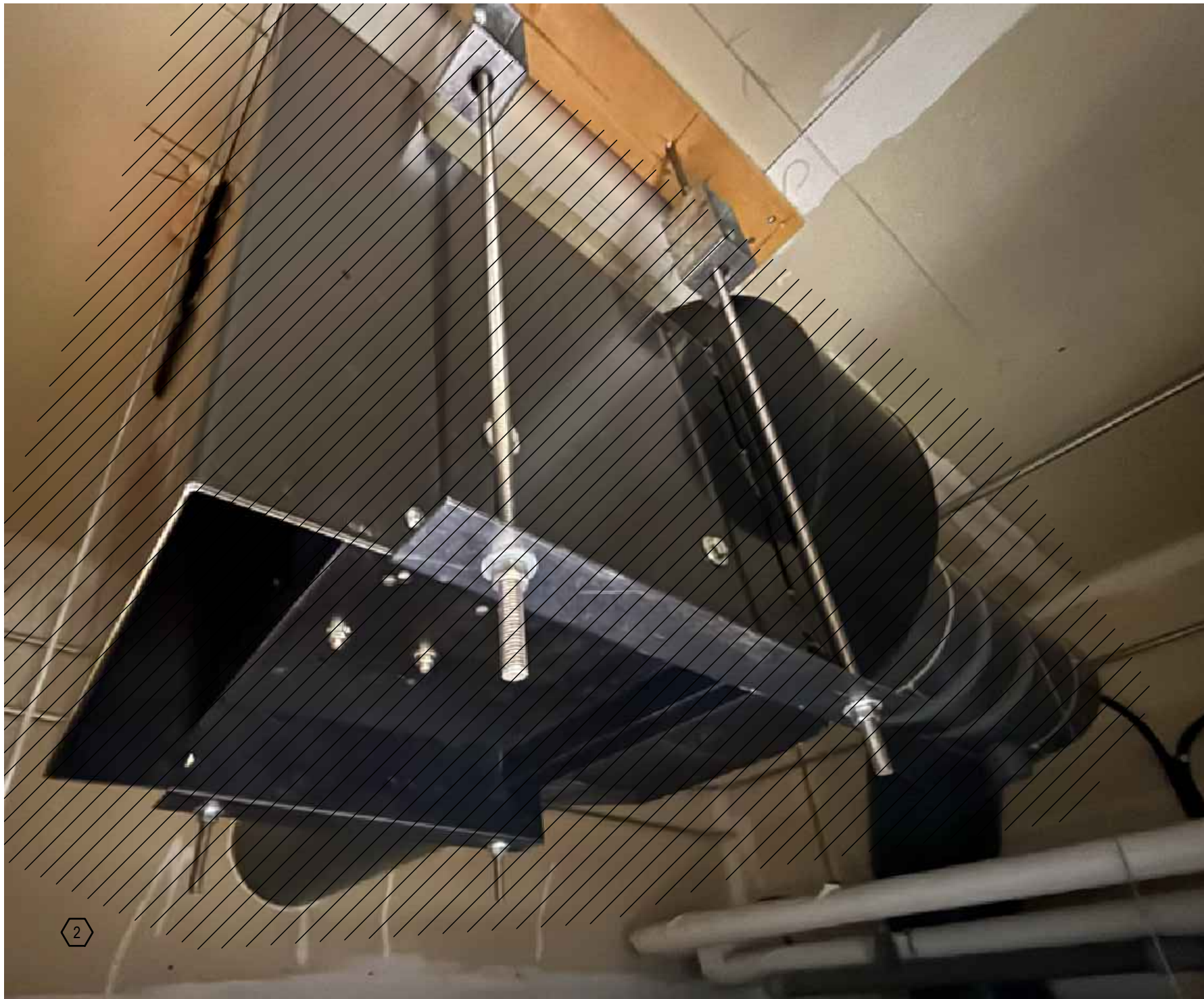
1 MECHANICAL DEMOLITION PLAN  
M02 1:100



2 EXISTING SUPPLY FAN EX-AH-1  
M02 1:100



3 EXISTING FUME HOOD EX-FH-1  
M02 1:100



4 EXISTING FUME HOOD EXHAUST FAN EX-EF  
M02 1:100

## GENERAL NOTES

- 1 EXISTING EQUIPMENT AND DUCTWORK SHOWN ON THIS DRAWING. THIS DRAWING ARE FOR INFORMATION ONLY.  
PRIOR TO DEMOLITION THE MECHANICAL CONTRACTOR SHALL VERIFY AND CONFIRM ON SITE LOCATIONS OF ALL EXISTING HVAC EQUIPMENT, DUCTS AND CONTROLS PRIOR TO DEMOLITION OF EXISTING. DURING DEMOLITION WORK CONTRACTOR SHALL COORDINATE WITH BUILDING OPERATOR TO MAINTAIN OPERATION.
- 2 REPAIR OPENINGS TO MAINTAIN EXISTING FIRE RATINGS.
- 3 CONFIRM WITH OWNER THE LOCATION OF STORAGE AND DISPOSAL PROCEDURES FOR ALL REMOVED EQUIPMENT AND FIXTURES.

## KEYNOTES

- 1 EX-EF AND EX-FH-1 TO BE DISCONNECTED AND REMOVED.
- 2 MATCH AND REPAIR WALL PENETRATION. INSULATE AND SEAL OPENING TO MATCH EXTERIOR AND INTERIOR FINISH.
- 3 PATCH, SEAL AND INSULATE DUCTWORK TO EX-AH-2.
- 4 EXISTING GLS AND GLR AND ALL ASSOCIATED ACCESSORIES TO EX-HC-1 TO BE REMOVED BACK TO ISOLATION VALVE AND CAPPED.
- 5 EX-AH-1, EX-HC-1, AND ASSOCIATED OUTDOOR AIR DUCTWORK AND ACCESSORIES TO BE REMOVED. EXISTING RETURN AIR DUCTWORK FROM LAB TO REMAIN TO BE RECONNECTED TO NEW AH-1. EXISTING FIRE DAMPER AT MECHANICAL ROOM WALL TO REMAIN FOR RE-USE. EX-HU-1 TO REMAIN FOR REUSE.

Public Works and  
Government Services  
Canada

Travaux Publics et  
Services gouvernementaux  
Canada

BGIS

INUVALUIT  
DEVELOPMENT CORPORATION

PERMIT TO PRACTICE  
WILLIAMS ENGINEERING CANADA INC  
Signature  
Date 22 Jan. 2026 L1817  
PERMIT NUMBER: P646  
NWT/NU Association of Professional  
Engineers and Geoscientists

REGISTERED PROFESSIONAL ENGINEER  
D.B. BROWN  
LICENSEE  
NT/NU 2026-01-22

|           |                       |                |
|-----------|-----------------------|----------------|
| B         | ISSUED FOR 90% TENDER | JAN/22<br>2026 |
| A         | ISSUED FOR 90% REVIEW | NOV/21<br>2025 |
| revisions |                       | date           |

project

DFO-INUVIK OFFICE-  
INSTALL NEW FUME HOOD

drawing

MECHANICAL  
DEMOLITION PLAN

|                       |                                 |               |
|-----------------------|---------------------------------|---------------|
| designed              | SA                              | conçu         |
| date                  | 2025.10.27                      |               |
| drawn                 | SA                              | dessiné       |
| date                  | 2025.10.27                      |               |
| approved              | DB                              | approuvé      |
| date                  |                                 |               |
| Tender                | JH                              | Soumission    |
| PWGSC Project Manager | Administrateur de projets TPSCG |               |
| project number        |                                 | no. du projet |

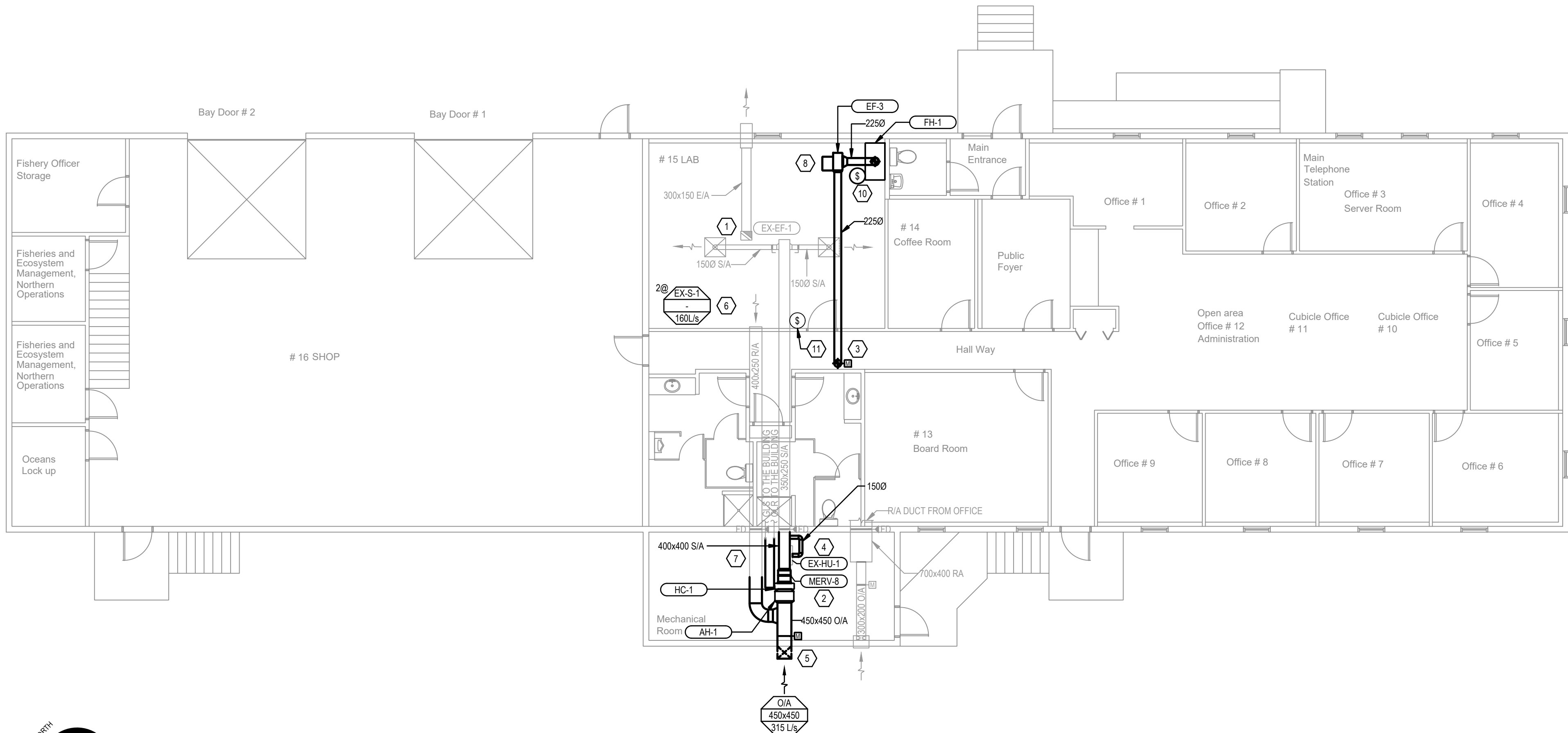
GOC6533145

drawing no.

M02

no. du dessin

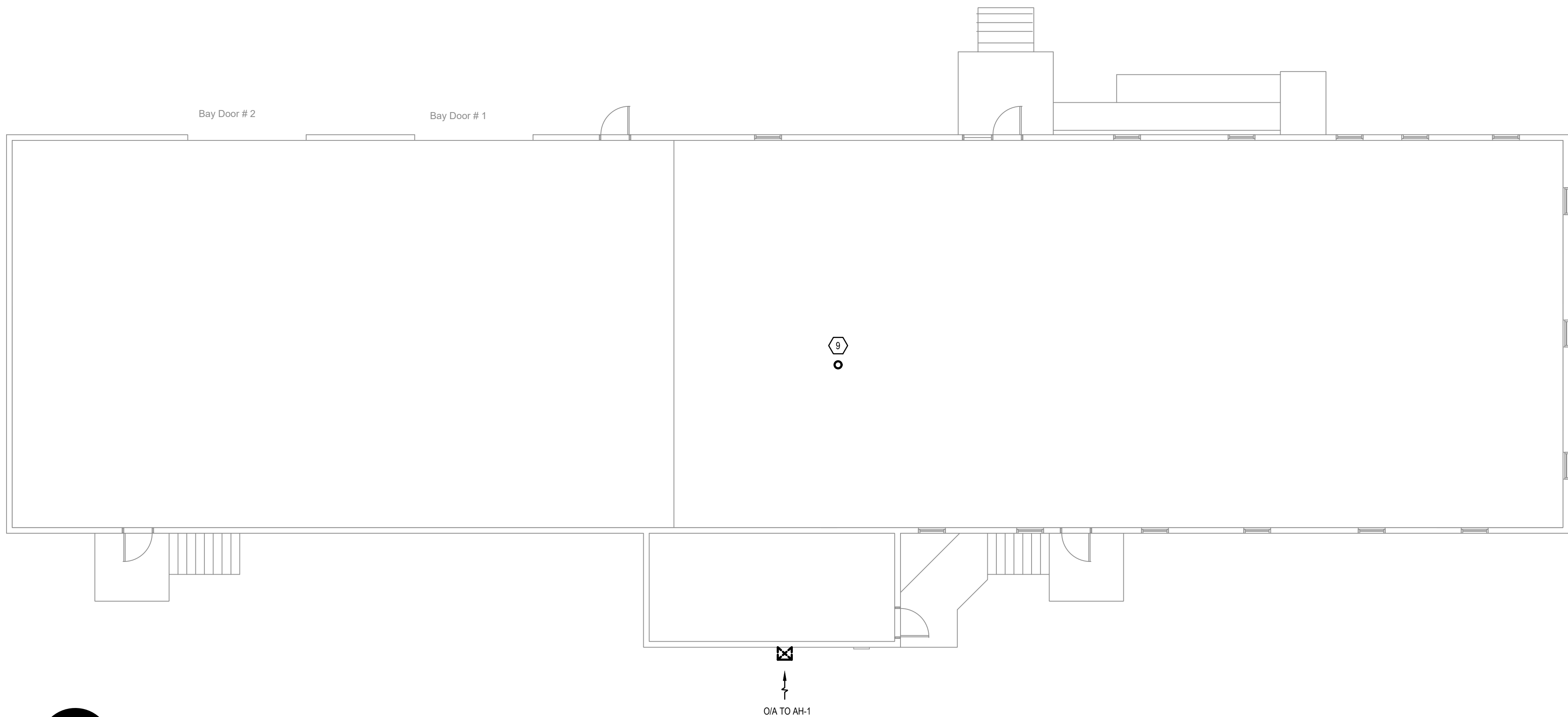




- GENERAL NOTES**
  - CONTRACTOR SHALL REVIEW THE MECHANICAL DRAWINGS & SITE CONDITIONS PRIOR TO CONSTRUCTION.
  - INSTALL DUCTING AND EQUIPMENT GENERALLY IN LOCATIONS AND ROUTING SHOWN. RUN DUCTING CLOSE TO BUILDING STRUCTURE, PARALLEL TO BUILDING LINES TO MAXIMIZE HEAD ROOM AND WITH MINIMUM INTERFERENCE WITH OTHER SERVICES AND FREE SPACE.
  - PATCH AND MAKE GOOD DAMAGED CEILING/WALL FOR NEW MECHANICAL WORK.
  - REPAIR OPENINGS TO MAINTAIN EXISTING FIRE RATINGS.
  - NEW SUPPLY AND RETURN AIR DUCTS SHOWN MAY BE ALTERED IN SIZE AND ROUTE TO ACCOMMODATE EXISTING TRUSS AND JOIST STRUCTURES WITHOUT EXTRA COST TO THE OWNER. REVISED SIZE MUST MEET SAME CROSS SECTIONAL SQUARE FOOT AREA OF DUCTS SHOWN. WIDTH TO HEIGHT RATIO NOT TO EXCEED 4:1.
  - ACOUSTIC INSULATION IS NOT TO BE USED AS A SUBSTITUTE FOR THERMALLY APPLIED INSULATION.
  - FIRE DAMPERS TO BE PROVIDED IN ALL DUCTWORK IN SCOPE AT FIRE SEPARATION PENETRATIONS INCLUDING BETWEEN BASEMENT, MAIN FLOOR, SECOND FLOOR, AND ATTIC.
- KEYNOTES**
  - EX-EF-1 CONTROLS TO BE MODIFIED TO PREVENT SIMULTANEOUS OPERATION OF EX-EF-1 AND EF-3.
  - 400mm x 400mm x 25mm MERV-8 FILTER.
  - 225 EA UP THROUGH ROOF. PROVIDE MOTORIZED DAMPER AT BUILDING ENVELOPE PRIOR TO EXTERIOR PENETRATION.
  - RECONNECT EX-HU-1 PAN TO DRAIN.
  - REFER TO DETAIL 01/M01.
  - REBALANCE EXISTING DIFFUSERS FOR AH-1 TO AIRFLOW AS INDICATED.
  - INSTALL NEW GLS AND GLR CONNECTION TO NEW HC-1. REFER TO DETAIL 02/M01.
  - CEILING-MOUNT EF-3 SUSPENDED FROM STRUCTURE ABOVE AND C/W SPRING ISOLATORS AND SEISMIC RESTRAINT SYSTEMS.
  - ROOF PENETRATION FOR 225Ø EXHAUST DUCT FROM EF-3 TO EXTEND TO 3m ABOVE ROOF. REFER TO DETAIL 04/M01.
  - SWITCH BUILT INTO NEW FH TO TURN ON EF-3.
  - EXISTING SWITCH TO BE REUSED IF POSSIBLE.



**1 MECHANICAL CONSTRUCTION PLAN**  
M03 1:100



**2 ROOF CONSTRUCTION PLAN**  
M03 1:100

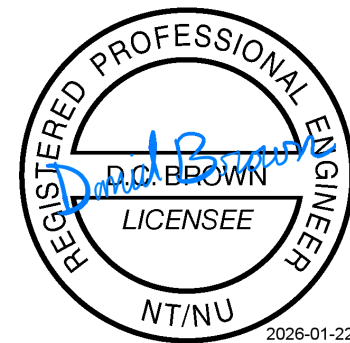
Public Works and  
Government Services  
Canada

Travaux Publics et  
Services gouvernementaux  
Canada

**BGIS**

**INUVIALUIT**  
DEVELOPMENT CORPORATION

PERMIT TO PRACTICE  
WILLIAMS ENGINEERING CANADA INC  
Signature  
Date 22 Jan. 2026 L1817  
**PERMIT NUMBER: P646**  
NWT/NU Association of Professional  
Engineers and Geoscientists



|           |                       |                |
|-----------|-----------------------|----------------|
| B         | ISSUED FOR 90% TENDER | JAN/22<br>2026 |
| A         | ISSUED FOR 90% REVIEW | NOV/21<br>2025 |
| revisions |                       | date           |

project project

**DFO-INUVIK OFFICE-  
INSTALL NEW FUME HOOD**

drawing dessin




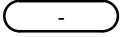
**MECHANICAL  
CONSTRUCTION PLAN**

|                       |                                 |               |
|-----------------------|---------------------------------|---------------|
| designed              | SA                              | conçu         |
| date                  | 2025.10.27                      |               |
| drawn                 | SA                              | dessiné       |
| date                  | 2025.10.27                      |               |
| approved              | DB                              | approuvé      |
| date                  |                                 |               |
| Tender                | JH                              | Soumission    |
| PWGSC Project Manager | Administrateur de projets TPSPG |               |
| project number        |                                 | no. du projet |

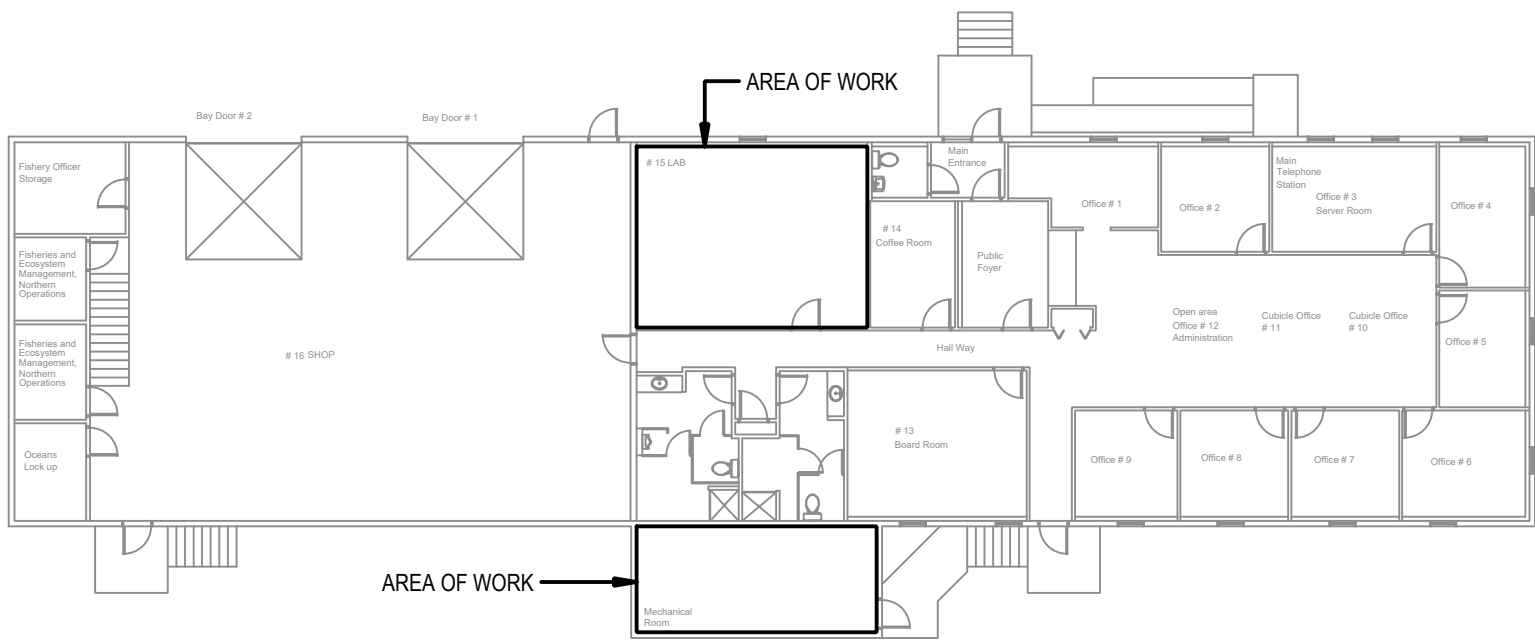
**GOC6533145**

drawing no. no. du dessin

**M03**

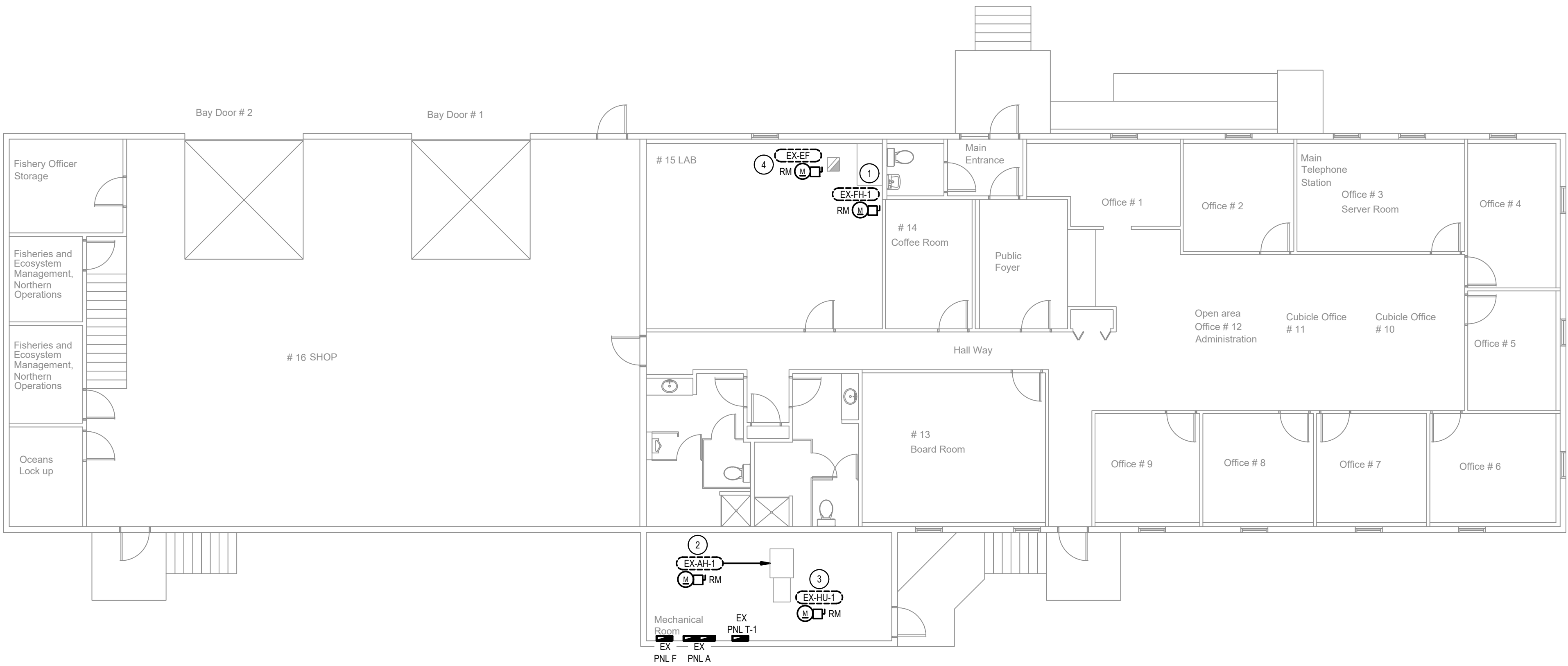
| POWER   |   |
|---|---|
| SYMBOL  | DESCRIPTION   |
|  | MOTOR & DISCONNECT  |
|  | DISCONNECT  |
|  | ELECTRICAL POWER PANEL<br>- SURFACE OR FLUSH AS INDICATED |
|  | EQUIPMENT TAG   |

| ABBREVIATIONS |                                       |
|---------------|---------------------------------------|
| SYMBOL        | DESCRIPTION                           |
| EX            | EXISTING DEVICE TO REMAIN             |
| RM            | REMOVE EXISTING DEVICE                |
| ER            | EXISTING DEVICE IN RELOCATED POSITION |
| N             | NEW DEVICE                            |
| AFG           | ABOVE FINISHED GRADE                  |
| BMS           | BUILDING MANAGEMENT SYSTEM            |
| TYP           | TYPICAL                               |

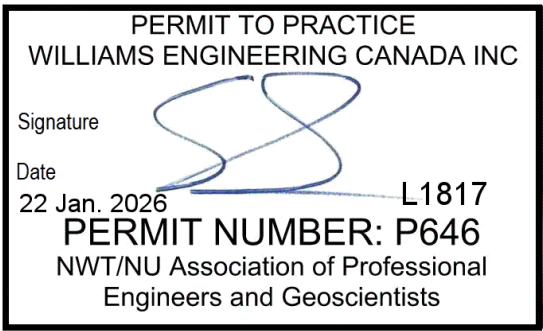
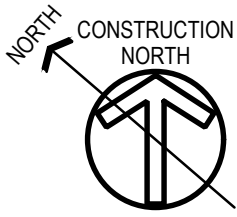


1 KEY PLAN  
E01 1:250

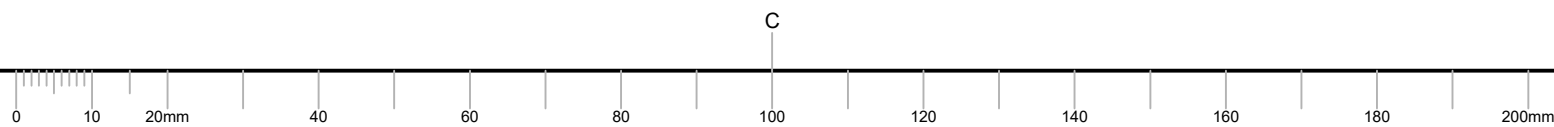
| GENERAL NOTES |   |
|---------------|---|
| 1             | ALL WORK SHALL BE AS PER NATIONAL, TERRITORIAL, & MUNICIPAL CODES & REGULATIONS & ALL AUTHORITIES HAVING JURISDICTION.  |
| 2             | DRAWINGS TO BE READ IN CONJUNCTION WITH ALL OTHER DISCIPLINES. CONTRACTOR SHALL NOTIFY ENGINEER OF ALL DISCREPANCIES.   |
| 3             | THE OWNER OR A REPRESENTATIVE(S) SHALL HAVE ACCESS TO THE WORK IN PROGRESS AT ALL TIMES AND SHALL RESERVE THE RIGHT TO INSPECT THIS WORK AT ANY TIME FOR COMPLIANCE WITH ALL REQUIREMENTS OF THE SPECIFICATION. HE OR SHE SHALL ALSO RESERVE THE RIGHT TO APPROVE EACH PHASE OF THE WORK BEFORE FURTHER WORK MAY BE DONE, TO HALT ALL WORK DEEMED TO BE IMPROPER OR NOT IN COMPLIANCE WITH THE PROJECT, AND TO REQUIRE THAT THE CONTRACTOR PROMPTLY CORRECT ALL IMPROPER PRACTICES AND DEFECTIVE OR DEFICIENT WORK. |
| 4             | EXISTING LAB FUME HOOD AND MECHANICAL ROOM FANS TO BE REPLACED WITH NEW. RE-USE EXISTING WIRING, BREAKERS, AND DISCONNECT SWITCHES ON FIELD VERIFICATION THAT CONDUCTOR SIZE, INSULATION RATING AND OVERCURRENT PROTECTION ARE ADEQUATE FOR THE NEW EQUIPMENT HP/FLA AND STARTING CHARACTERISTICS. CONTRACTOR TO UPGRADE WIRING/PROTECTION WHERE EXISTING INFRASTRUCTURE IS NOT ADEQUATE.   |
| KEYNOTES      |   |
| 1             | CONTRACTOR TO CONFIRM CIRCUIT AND PANEL OF ORIGIN FOR EXISTING LAB FUME HOOD. CONNECT NEW FUME HOOD TO EXISTING CIRCUIT. RE-USE EXISTING CIRCUIT AND WIRING TO INSTALL NEW LAB FUME HOOD.   |
| 2             | DISCONNECT POWER FROM EXISTING EX-AH-1 UNIT.  |
| 3             | DISCONNECT POWER FROM EX-HU-1 UNIT.   |
| 4             | DISCONNECT POWER FROM EXISTING EX-EF UNIT. RE-USE EXISTING WIRING. LOCAL DISCONNECT, AND OVERCURRENT PROTECTION FOR NEW EF-3.   |



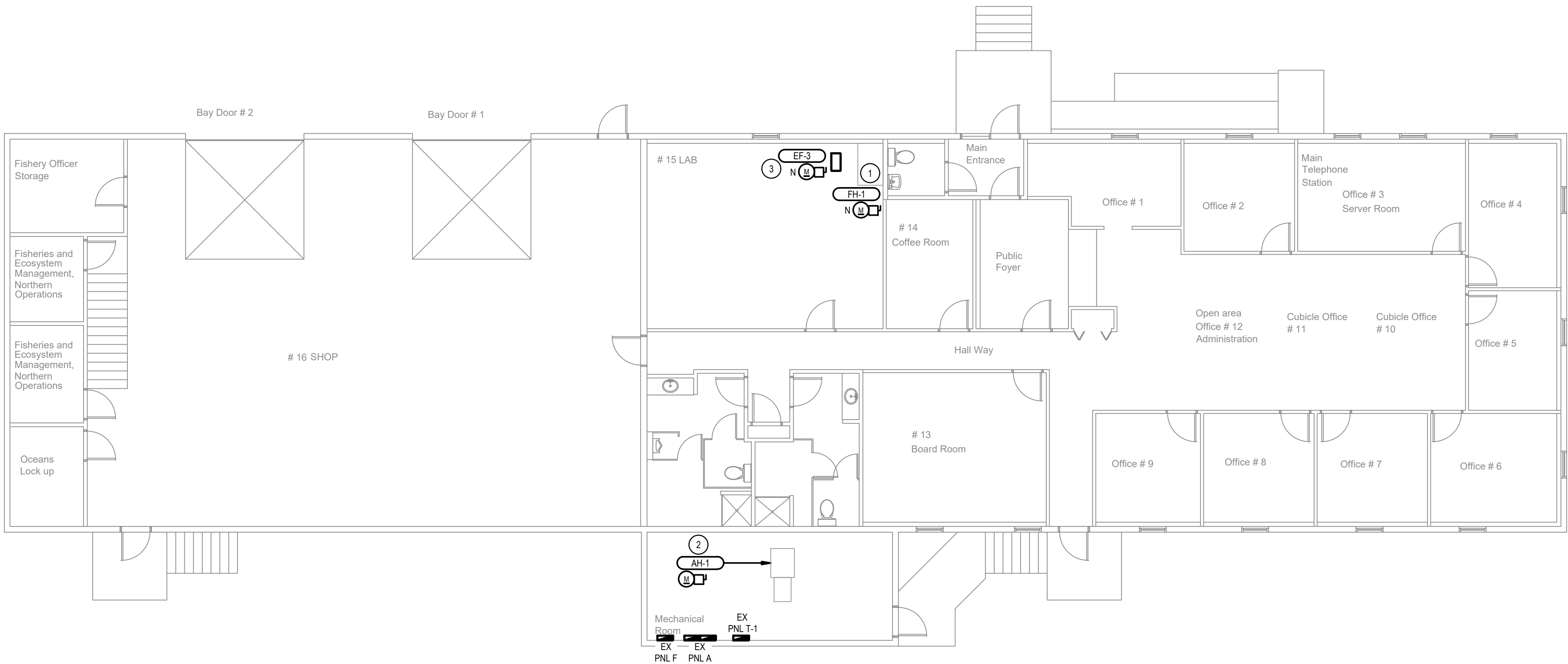
2 DEMOLITION PLAN  
E01 1:100



|                               |                                 |                |
|-------------------------------|---------------------------------|----------------|
| B                             | ISSUED TENDER                   | JAN/22<br>2026 |
| A                             | ISSUED FOR 90% REVIEW           | NOV/21<br>2025 |
| revisions                     |                                 | date           |
| project                       | projet                          |                |
| INUVIK OFFICE<br>FUME HOOD    |                                 |                |
| drawing                       | dessin                          |                |
| ELECTRICAL<br>DEMOLITION PLAN |                                 |                |
| designed                      | JT                              | conçu          |
| date                          | 2025.10.27                      |                |
| drawn                         | JT                              | dessiné        |
| date                          | 2025.10.27                      |                |
| approved                      | JP                              | approuvé       |
| date                          | 2026.01.07                      |                |
| Tender                        | Soumission                      |                |
| TH                            | Administrateur de projets TPSCG |                |
| project number                | no. du projet                   |                |
| GOC6533145                    |                                 |                |
| drawing no.                   | no. du dessin                   |                |
| E01                           |                                 |                |







1 MAIN FLOOR PLAN  
E02 1:100

| EQUIPMENT SCHEDULE |     |             |                 | CHARACTERISTICS |       |           |     |     |     | CONTROL |         |     |     |       | FEEDER |                          |                  |                                   | NOTES |
|--------------------|-----|-------------|-----------------|-----------------|-------|-----------|-----|-----|-----|---------|---------|-----|-----|-------|--------|--------------------------|------------------|-----------------------------------|-------|
| TAG                | QTY | DESCRIPTION | LOCATION        | VOLTAGE         | PHASE | LOAD (kW) | HP  | FLA | MCA | MOP     | STARTER | HOA | LRD | PILOT | F/A    | BRANCH/SOURCE            | BREAKER          | CONDUCTORS                        | NOTES |
| FH-1               | 1   | FUME HOOD   | LAB#15          | 120             | 1     | FRAC      |     |     |     | 15      | INT     | -   | X   | BMS   | -      | REFER TO PANEL SCHEDULES | 2c #12 RW90 XLPE | + #14 Cu BOND IN 21mm EMT CONDUIT |       |
| AH-1               | 1   | SUPPLY FAN  | MECHANICAL ROOM | 120             | 1     | 0.157     | -   | 4.1 | 5.1 | 15      | INT     | -   | X   | BMS   | -      | REFER TO PANEL SCHEDULES | 2c #12 RW90 XLPE | + #14 Cu BOND IN 21mm EMT CONDUIT |       |
| EF-3               | 1   | EXHAUST FAN | ROOF            | 240             | 1     |           | 1/2 | 4.9 |     | 15      | INT     | -   | X   | BMS   | -      | REFER TO PANEL SCHEDULES | 2c #12 RW90 XLPE | + #14 Cu BOND IN 21mm EMT CONDUIT |       |

**NOTES**

1. CONTRACTOR TO SIZE OVERCURRENT DEVICES AND FEEDERS TO SUIT THE NAMEPLATE RATINGS OF AS-SUPPLIED EQUIPMENT.

2. PRIOR TO INSTALLATION OF EQUIPMENT, COORDINATE FINAL LOCATIONS WITH RESPECTIVE TRADES.

3. WHERE A LOCKABLE DISCONNECTING MEANS IS PROVIDED WITH THE EQUIPMENT, A DUPLICATE DISCONNECTING MEANS IS NOT REQUIRED.

4. PROVIDE PLUG AND CORD AS REQUIRED

| ABBREVIATIONS                | CONTROL                     | ACCESSORIES                           | PILOT DEVICES                     |
|------------------------------|-----------------------------|---------------------------------------|-----------------------------------|
| D/S - DUTY/STANDBY OPERATION | MG MAGNETIC STARTER         | R RELAY OUTPUTS / MONITORING CONTACTS | BMS BUILDING MANAGEMENT SYSTEM    |
| L/L - LEAD/LAG OPERATION     | MMS MANUAL MOTOR STARTER    | HOA HAND OFF AUTO                     | DDC DIRECT DIGITAL CONTROL SYSTEM |
| F/A - FIRE ALARM             | MPS MOTOR PROTECTION SWITCH | LRD LOAD RATED DISCONNECT             | TSW TOGGLE SWITCH                 |
| INT - INTEGRAL DEVICE        | INT INTEGRAL TO UNIT        | PL PILOT LIGHTS                       |                                   |
| N/A - NOT APPLICABLE         | CONT CONTINUOUS OPERATION   | S/S START STOP STATION                |                                   |

2 EQUIPMENT SCHEDULE  
E02

- GENERAL NOTES
- 1

ALL WORK SHALL BE AS PER NATIONAL, TERRITORIAL, & MUNICIPAL CODES & REGULATIONS & ALL AUTHORITIES HAVING JURISDICTION.
- 2

DRAWINGS TO BE READ IN CONJUNCTION WITH ALL OTHER DISCIPLINES. CONTRACTOR SHALL NOTIFY ENGINEER OF ALL DISCREPANCIES.
- 3

THE OWNER OR A REPRESENTATIVE(S) SHALL HAVE ACCESS TO THE WORK IN PROGRESS AT ALL TIMES AND SHALL RESERVE THE RIGHT TO INSPECT THIS WORK AT ANY TIME FOR COMPLIANCE WITH ALL REQUIREMENTS OF THE SPECIFICATION. HE OR SHE SHALL ALSO RESERVE THE RIGHT TO APPROVE EACH PHASE OF THE WORK BEFORE FURTHER WORK MAY BE DONE, TO HALT ALL WORK DEEMED TO BE IMPROPER OR NOT IN COMPLIANCE WITH THE PROJECT, AND TO REQUIRE THAT THE CONTRACTOR PROMPTLY CORRECT ALL IMPROPER PRACTICES AND DEFECTIVE OR DEFICIENT WORK.
- 4

EXISTING LAB FUME HOOD AND MECHANICAL ROOM FANS TO BE REPLACED WITH NEW. RE-USE EXISTING WIRING, BREAKERS, AND DISCONNECT SWITCHES.
- KEYNOTES
- 1

CONTRACTOR TO CONFIRM CIRCUIT AND PANEL OF ORIGIN FOR EXISTING LAB FUME HOOD. CONNECT NEW FUME HOOD TO EXISTING CIRCUIT. RE-USE EXISTING CIRCUIT INCLUDING WIRING AND BREAKER TO INSTALL NEW LAB FUME HOOD.
- 2

CONNECT NEW AH-1 UNIT TO EXISTING AIR HANDLING UNIT CIRCUIT. RE-USE EXISTING WIRING, BREAKER, AND LOCAL DISCONNECT SWITCH.
- 3

CONNECT NEW EF-3 ROOFTOP UNIT TO EXISTING PANEL A 1P15A BREAKER PREVIOUSLY USED FOR EXISTING EX-EF UNIT. RE-USE EXISTING WIRING, BREAKER, AND LOCAL DISCONNECT SWITCH. UPDATE DISCONNECT SWITCH LABEL.

Public Works and Government Services Canada

Travaux Publics et Services gouvernementaux Canada

BGIS

INUVIALUIT DEVELOPMENT CORPORATION

PERMIT TO PRACTICE  
WILLIAMS ENGINEERING CANADA INC

Signature  
Date 22 Jan. 2026  
L1817  
PERMIT NUMBER: P646  
NWT/NU Association of Professional Engineers and Geoscientists

REGISTERED PROFESSIONAL ENGINEER  
IFT  
J. J. FRAN  
LICENSEE  
NTNU  
2026-01-22

|           |                       |             |
|-----------|-----------------------|-------------|
| B         | ISSUED TENDER         | JAN/22 2026 |
| A         | ISSUED FOR 90% REVIEW | NOV/21 2025 |
| revisions |                       | date        |
| project   |                       | projct      |

INUVIK OFFICE  
FUME HOOD

drawing

dessin

ELECTRICAL  
CONSTRUCTION PLAN

|                       |            |                                 |
|-----------------------|------------|---------------------------------|
| designed              | JT         | conçu                           |
| date                  | 2025.10.27 |                                 |
| drawn                 | JT         | dessiné                         |
| date                  | 2025.10.27 |                                 |
| approved              | JP         | approuvé                        |
| date                  | 2026.01.07 |                                 |
| Tender                |            | Soumission                      |
| TH                    |            |                                 |
| PWGSC Project Manager |            | Administrateur de projets TPSGC |
| project number        |            | no. du projet                   |
|                       | GOC6533145 |                                 |
| drawing no.           |            | no. du dessin                   |
|                       | E02        |                                 |

PWGSC A1 (2024)

0 10 20mm 40 60 80 100 120 140 160 180 200mm